





SHINZAN KURIHARA   @shinzan.k

1984 - / M
Born in Tokyo, Based in Tokyo and Shizuoka


- Exhibition
- Solo Exhibitions-
- 2020 STRIPED HOUSE GALLERY / Tokyo
 - 2019 STRIPED HOUSE GALLERY / Tokyo
gallery G / Hiroshima
 - 2018 STRIPED HOUSE GALLERY / Tokyo

<https://shinzan-k.com>



“What Makes Humans Human”
人間 [Human]
2020
Sumi-ink on paper
162.0×86.0cm

K I T A I
3-1 Hayabusacho, Chiyodaku, Tokyo 102 0092 Japan
<http://www.kitaikikaku.co.jp/gallery>
info@kitaikikaku.co.jp

  @gallerykitai

MOKOMOKO - BORDER
SHINZAN KURIHARA



MOKOMOKO - BORDER
SHINZAN KURIHARA

Today, the evolution of social networking sites and AI has enabled people to instantly connect worldwide, and has led to an accelerating development of borderlessness. This is something good and useful. However, are the human minds keeping up with this development? For example, there are times when false rumors and fake news spread in an instant, without its information being looked into more precisely to see if it is trustworthy. At times, this has been life-threatening, or have even driven some people to take their own lives. Borders within situations where we should control ourselves are also starting to vanish.

When we say border, most people would probably have an image of national borders, but what I wish to focus on in particular is the border that exists within an individual's inner self. However, this is something extremely complex and sensitive. Its negative affect may lead to discrimination. Therefore, what is perhaps needed in modern society is not a border merely for differentiation, but instead, a border that is created as a positive result from plenty of conflicts. While this will help to stop the dilution of human nature, it should also help us to show true respect for one another.

Precisely speaking, this is a process of taking a step back to experience several conflicts through issues that are contrary to each other, and then searching for the light that serves as a clue to the solution within the verge of its border. I have expressed this through my "Sho" (Japanese calligraphy) and have named this approach as *MOKOMOKO* - BORDER. The opposition within the conflict may extend to the dual nature of one's inner self, individuality and universality, or, a universal theme of life and death. In Japanese, *MOKOMOKO* describes "the state of lumps forming one after another from its surroundings". Through a distinctive way of creating sumi ink, such as the adjustment of the sumi ink's temperature by a unit of 1 degree and the aging of the rubbed sumi ink, I have blurred the sumi inks in some parts of the word in my "Sho" to create such lumps, in order to project various emotions including conflict. The word, along with its original meaning, is brought to life. Then, as the *MOKOMOKO* lines clashes and conflicts with each other, a faint but strong border is created between them, producing light. This also signifies that spaces and borders as a result of such conflicts, are what creates values. The *MOKOMOKO* sumi ink seems as if it is spreading and getting bigger at this very moment, enabling it to keep its raw permanency.

Conflicts are originally a part of human nature, and we strive to search for the exit. The more severe this process is, the more the border that is left from it becomes a substantial, living glimmer of light, allowing us to regain the fundamental meaning of our existence. Indeed, the border which I propose is the strong light of salvation that will eventually appear, and also something that will open the way to the future from the conflicts and struggles that everybody has inside themselves.

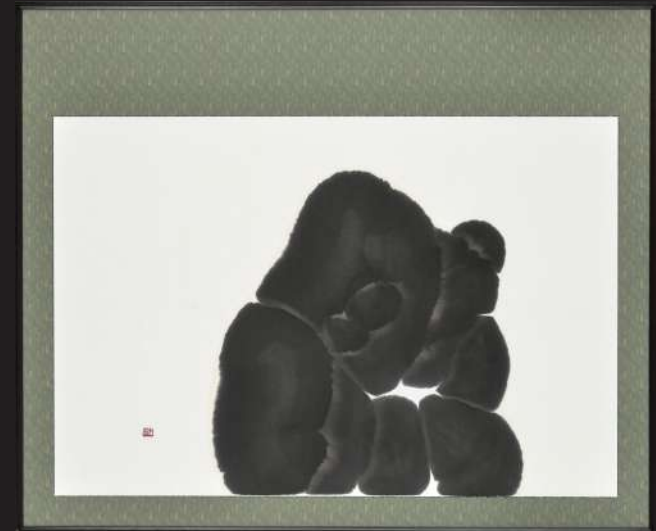
Through an unexpected closure caused by the COVID-19, I believe that many of us were given the opportunity to face ourselves. Moving towards the post COVID-19 era, I hope that viewers will identify their own life with my works, while thinking how to seek for the light of border from beyond the chaotic conflict.



"Variety of Emotions Pouring Down on the Street" 「 」 [Brackets]
2020
Sumi-ink on paper
152.3×111.4cm



"Surviving Today, while Seeking for the Light" 今 [Now]
2020
Sumi-ink on paper
86.0×86.0cm



"Stay Calm and Keep Doing What Should be Done" 然 [Thus]
2020
Sumi-ink on paper
98.3×118.0cm



"The World in Chaos" 禍 [Pandemic]
2020
Sumi-ink on paper
83.2×118.0cm